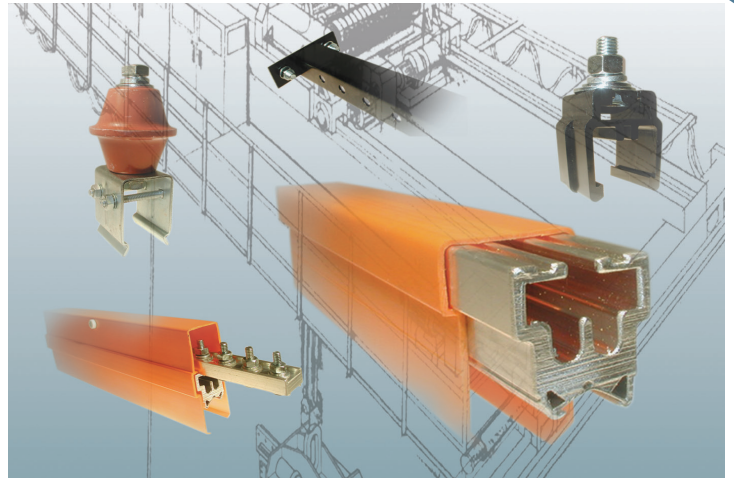


# ELECTROBAR® HX SERIES

## INSULATED CONDUCTOR BAR SYSTEM

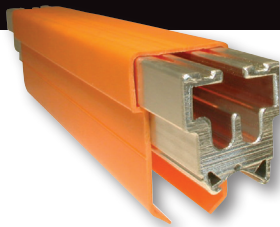
When you need high amperage power delivery for a heavy duty application, ELECTROBAR® HX Series Insulated Conductor Bar System is the solution.

- Accommodates up to 600 Volt AC and 250 Volt DC applications
- Line elements are available to carry 400, 700, and 1000 amps continuous current
- Rated for use in environments up to 160° F ambient temperature
- Aluminum alloy extruded line elements with stainless steel lined contact surface provide better performance and increased durability
- Inverted V contact surface for positive tracking of collector shoes
- Grounding conductor bar available with green cover for ease of identification
- HX Systems are designed for bottom entry only, and are not intended for lateral (side entry) applications.



### LINE ELEMENT SECTIONS

Line elements are constructed of an aluminum alloy extrusion with integral stainless steel contact surfaces. They are available in convenient 10 or 20 foot sections. All line elements are designed to carry the specified current rating continuously without overheating.



Description	Catalog Number		
	400 Amp	700 Amp	1000 Amp
Line Element Section, 20 Feet Long, Orange Cover	HX-400A	HX-700A	HX-1000A
Line Element Section, 20 Feet Long, Green Cover	HX-400A-G	HX-700A-G	HX-1000A-G
Line Element Section, 10 Feet Long, Orange Cover	HX-400A10	HX-700A10	HX-1000A10
Line Element Section, 10 Feet Long, Green Cover	HX-400A10-G	HX-700A10-G	HX-1000A10-G
Approximate Shipping Weight	1.5 lbs./ft.	2.5 lbs./ft.	3.5 lbs./ft.

Many parts of the Electrobar HX system are made from plastic insulating materials. The insulating covers for normal temperature use are made of PVC, the plastic hangers are made from polyamide (nylon) as are the plastic parts of the collectors. If your

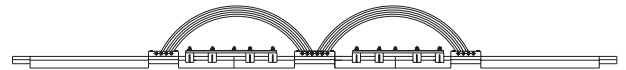
### EXPANSION ELEMENTS

Expansion sections are used for long runways to allow for thermal expansion of the conductor bar. They are also used at expansion joints in the supporting structure.

A 10 foot long expansion section is required for every 300 feet of conductor run.

For example, a 600 foot long installation would require an expansion section only in the center of the run.

Anchor pins are included with each expansion section.



Description	Catalog Number		
	400 Amp	700 Amp	1000 Amp
Expansion Section, 10 Feet Long, Orange Cover	HX-400E	HX-700E	HX-1000E
Expansion Section, 10 Feet Long, Green Cover	HX-400E-G	HX-700E-G	HX-1000E-G
Approximate Shipping Weight	15 lbs.	25 lbs.	35 lbs.

application uses materials or chemicals that can evaporate or get into the air and onto the conductor bar parts, please consult with Magnetek about the suitability of this product in your environment.



**MAGNETEK**  
MATERIAL HANDLING

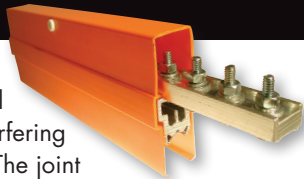
**ELECTROMOTIVE SYSTEMS**

YOUR ONE-STOP SOURCE FOR MATERIAL HANDLING CONTROL SOLUTIONS

With our combination of extensive application experience and leading-edge products, Magnetek provides the ultimate solution for overhead motion control.

## JOINT ASSEMBLY KIT

Joint Assembly Kit connection assemblies are available to assure full current carrying capacity without interfering with free travel of collector contacts. The joint assembly is designed to automatically align conductor bar sections during installation. Fastening hardware ensures a good, tight electrical and mechanical joint between conductor sections. The joint assembly kit includes the insulating joint cover.



Description	Catalog Number		
	400 Amp	700 Amp	1000 Amp
Joint Assembly Kit	HX-400JK	HX-700JK	HX-1000JK
Approximate Shipping Weight	1.5 lbs.	2.0 lbs	3.0 lbs.

## POWER FEED KIT

The Power Feed Kit includes a cover and cable lug terminals for power connection.



System Rating	Catalog Number	Approximate Shipping Weight
400 Amp	HX-400FK	.8 lbs.
700 Amp	HX-700FK	2.4 lbs.
1000 Amp	HX-1000FK	3.2 lbs

## MOUNTING BRACKET

Web mounting brackets are available in 24 inch lengths with mounting holes punched every two inches. Mounting hardware is included.

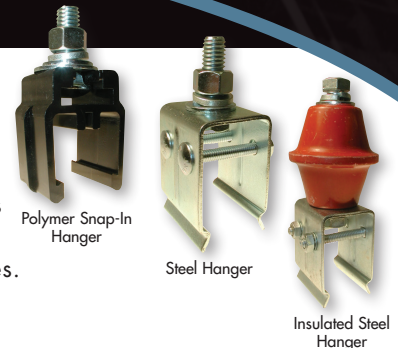


Description	Catalog Number	Approximate Shipping Weight
Web Mounting Bracket, 24 inch	BK-HX24	3.7 lbs.

**For more information, contact Magnetek Material Handling or your local Magnetek Sales Representative.**

## HANGER ASSEMBLY

To provide support of conductor sections, choose from polymer snap-in, steel, or insulated steel hanger assemblies. Hanger assemblies accommodate a minimum conductor spacing of 4 inches.



Line Element Rating	Catalog Number		
	Polymer Snap-In Type	Steel Clamp Type	Insulated Steel Type
400 Amp	HX-400H	N/A	N/A
700 & 1000 Amp	HX-1000H	HX-1000SH	HX-1000SHI
Approximate Shipping Weight	.2 lbs./ .3 lbs.	.6 lbs.	1.20 lbs.

## END COVER

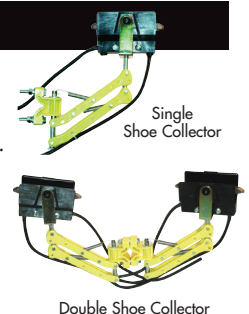
This vinyl cover insulates the conductor bar at each end of a system.



Description	Catalog Number	Approximate Shipping Weight
End Cover for 400 Amp	HX-400EC	.7 lbs.
End Cover for 700 & 1000 Amp	HX-1000EC	1.0 lbs.

## COLLECTOR ASSEMBLIES

Collector assemblies are offered in single or double shoe designs. They provide continuous current pick up from 200 through 400 amperes. The contact shoes are mechanically supported by an insulating support assembly that is spring loaded by an arm and body mechanism. Collectors are furnished with copper graphite contacts for speeds up to 900 feet per minute.



Collector Type	Catalog Number	Approximate Shipping Weight
200 Amp Single Shoe	PHX-200SPC-A	.7 lbs.
400 Amp Double Shoe	PHX-400STPC-A	1.0 lbs.



**ELECTROMOTIVE SYSTEMS**

N49 W13650 Campbell Drive  
Menomonee Falls, WI 53051  
Toll-Free Phone 800.288.8178  
Toll-Free Fax 800.298.3503  
Phone 262.783.3500  
Fax 262.783.3510

MH113\_HX Brochure update  
© Magnetek, Inc. 2013

WWW.MAGNETEKMH.COM